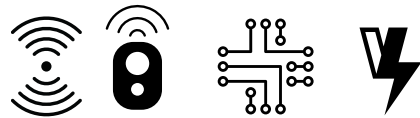


POWERLOOK



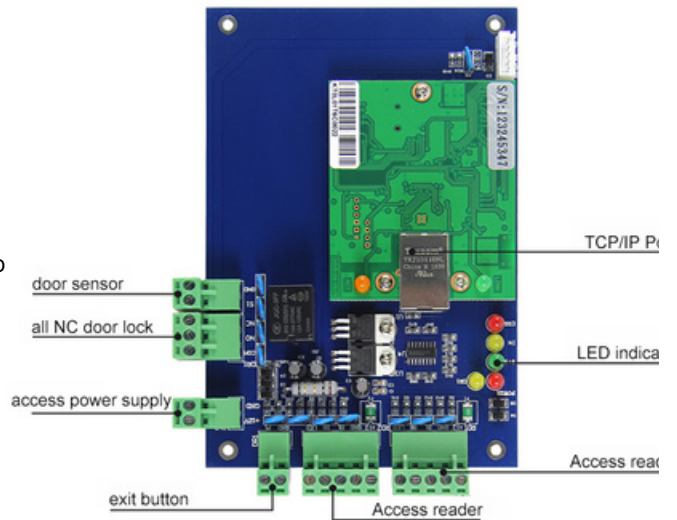
ACCESS CONTROL PANEL

(PL 100, 200 & 400)

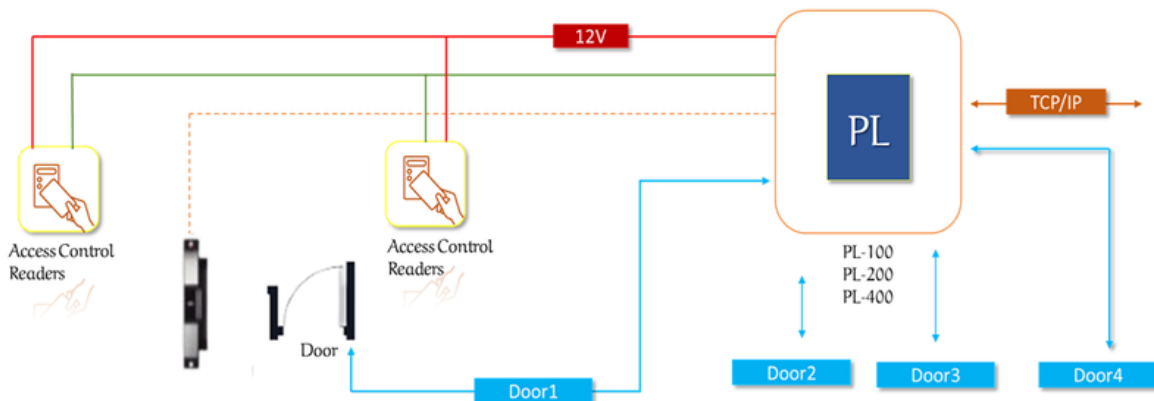


FACILITY ACCESS CONTROL

Our High-performance TCP/IP network controllers PL100, PL200 & PL400, control up to; one door, two doors & four doors with all door accessories.



POWERLOOK System Architecture



SPECIFICATION

| Parameter | Single Door Control Panel | Multi Door (2) Control Panel | Multi Door (4) Control Panel |
|-------------------------------------|--|---|--|
| Model | PL-100 | PL-200 | PL-400 |
| Communication | TCP/IP 10M/100M adaptive | TCP/IP 10M/100M adaptive | TCP/IP 10M/100M adaptive |
| Description | Control 1 door, get in and outdoor by swiping card, or get in by swiping card and get outdoor by button. | Control 2 doors, get in and outdoor by swiping card, or get in by swiping card and get out door by button | Control 4 doors, get in the door by swiping card, and get outdoor by button. |
| Size of PCB board | 160mm*106mm | 160mm*106mm | 218mm*106mm |
| Size of Case | 273mm*228mm*65mm | | |
| Power Supply | 12VDC 4-7A | | |
| Input Format of Reader | Wiegand 26 (All card readers with compatible protocols, such as Motorola, HID, EM, MI fare one etc.) | | |
| Power Consumption of Circuit Board | Less than 100mA | | |
| Quantity of Readers | 2 pcs | 4 pcs | 4 pcs |
| Door Controlled | 1 door | 2 doors | 4 doors |
| Door opening time extending setting | 1-600 seconds(adjustable) | | |
| Max q' ty of controller | No limit | | |
| Operation Temperature | -40°C ~70°C | | |
| Operation Humidity | 10-90 % RH, No Condensation | | |
| Q' ty of users | 20,000 Users | | |
| Q' ty of Event Buffers (offline) | 100,000 event buffers | | |

| Model | PL-100 | PL-200 | PL-400 |
|---|--|--------|--------|
| Power interruption protection measure | High Speed Memory, Records never lose | | |
| Max Distance from Reader to Controller | 100m (suggestion distance 80m) | | |
| Max Distance between Controllers | TCP/IP: Depends on net coverage area | | |
| Package included | PCB board, software, manual, certificate. carton | | |
| Alarm for long time door open, illegal break-in, intimidate | Yes | | |
| Fire and alarm linkage | If no connection with the expansion board, only has software interface alarm, and drive the computer speaker. If connected with expansion board, is able to alarm by hardware, if connected with strengthened expansion board, then is able to Security alarm, Model is ACB-EA05 | | |
| Compulsive open and close door at long time | Yes | | |
| Open door in remote distance | Yes | | |
| Inter block | No | Yes | Yes |
| Anti-pass back and tail | Yes | Yes | Yes |
| Multi-card open door | Yes | | |
| Open long time at specified time | | Yes | |
| Electronic map | Yes | | |
| Urgency locking | | Yes | |
| First card unlocking | Yes | | |
| Unlock based on internal and external validation | | Yes | |
| Keypad (card+ password, supper password) | Yes | | |

